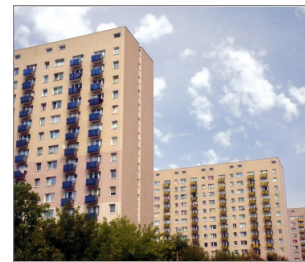


Wire Mesh Sleeves

Metal, zinc-plated mesh sleeve for use with bonded anchors in hollow substrates and concrete



Product information

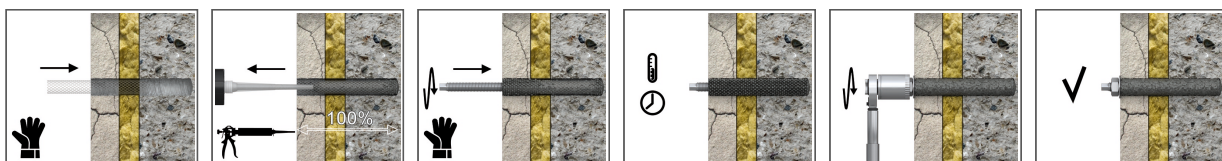
Features and benefits

- Reduces consumption of resin and holds threaded rod in position
- Optimal mechanical interlock
- Dedicated for deep anchorage
- Necessary for use in copy-eco system - reinforcement of suspension rod in large-panel construction systems

Applications

- For use with R-STUDS threaded rods in hollow base materials
- [English]: Stosowana w podłożach pustych.

Installation guide



1. Drill the hole and clear it with steps proper for the used substrate.
2. Insert the mesh into pre-drilled hole, inject the resin and apply the stud.
3. Apply the curing time given on the label of bonded anchor.
4. After full curing of the resin complete the installation using torque indicated in proper ETA assesment.

Product information

Product Code	Diameter	Hole diameter	Length	Stud size
	d	d _i	L	
	[mm]	[mm]	[mm]	-
SP-CE-R08	10	12	1000	M8
SP-CE-R10	12	14	1000	M8-M10
SP-CE-R12	14	16	1000	M12
SP-CE-R16	20	22	1000	M16
SP-CE-R20	26	28	1000	M20

Product commercial data

Product Code	Diameter [mm]	Hole diameter [mm]	Length [mm]	Stud size	Quantity [pcs]			Weight [kg]			Bar Codes
					Box	Outer	Pallet	Box	Outer	Pallet	
SP-CE-R08	10	12	1000	M8	10	10	1500	0.64	0.64	125.4	5906675266138
SP-CE-R10	12	14	1000	M8-M10	10	10	1500	0.56	0.56	113.3	5906675610122
SP-CE-R12	14	16	1000	M12	10	10	1500	0.66	0.66	129.0	5906675610320
SP-CE-R16	20	22	1000	M16	10	10	1500	0.77	0.77	144.9	5906675610528
SP-CE-R20	26	28	1000	M20	5	5	750	0.57	0.57	114.8	5906675610726